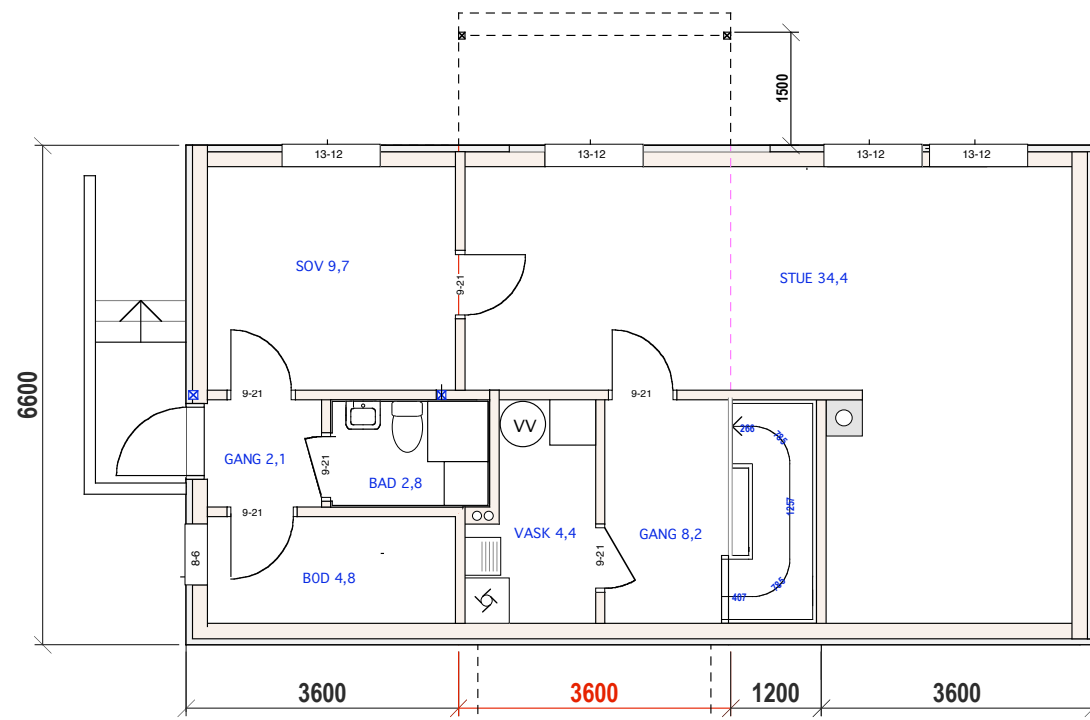
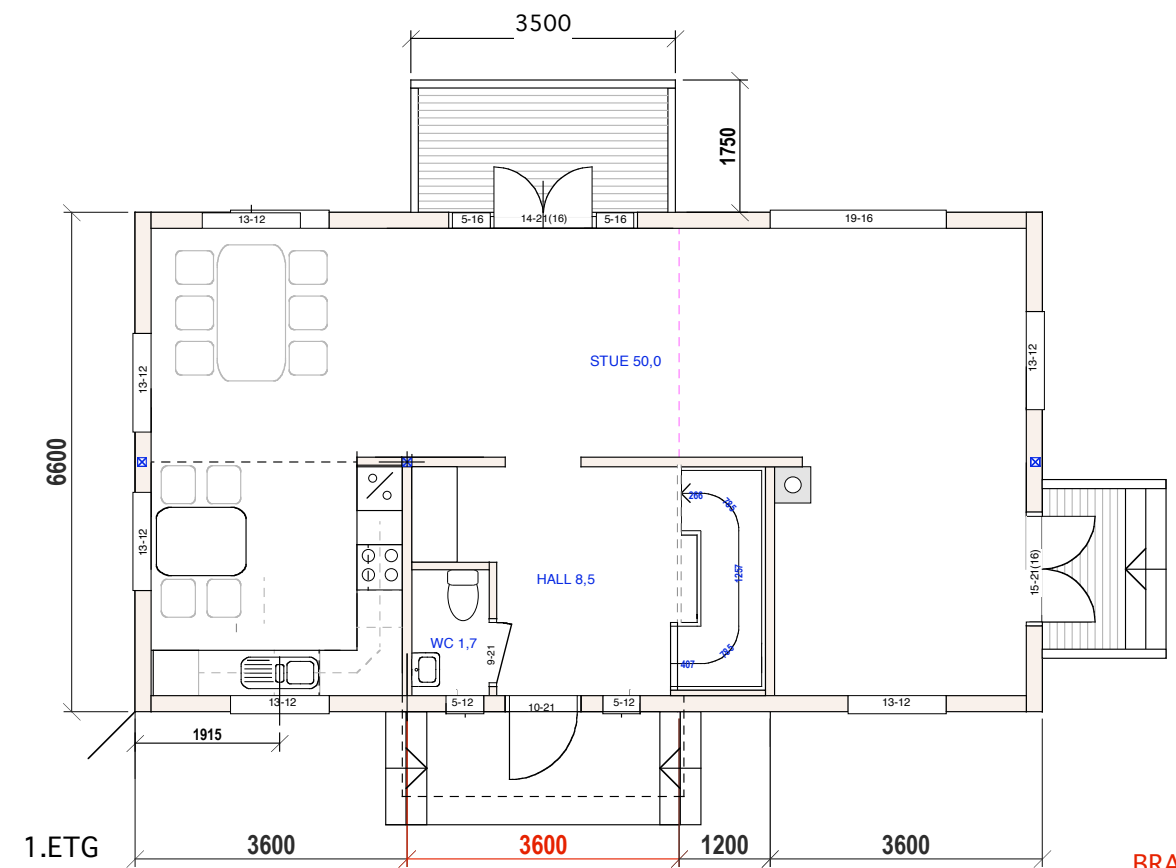


BRA 71

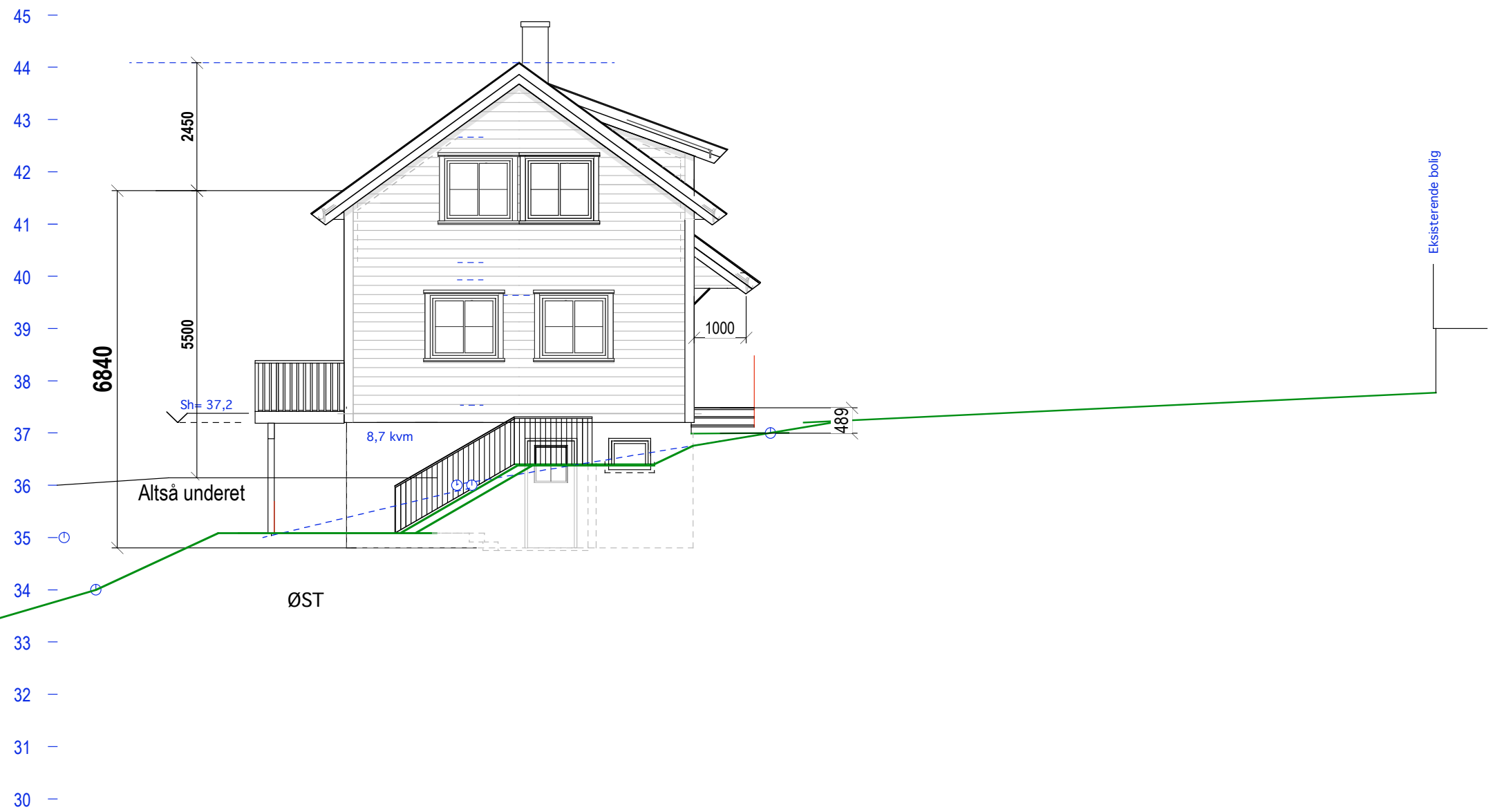


BRA 69



BRA 71

SUM BRA 200



Areal synlig grunnmur  
 Nord=2,6  
 Syd=23,3  
 Vest=4,9  
 Øst=8,7  
 Sum=39,5

Omkræts  
 $2(6,6 \times 12,0) = 37,2$   
 Avstand fra topp grunnmur til gjennomsnittlig terreng:  
 $39,5 / 37,2 = 1,06 \text{ m}$

