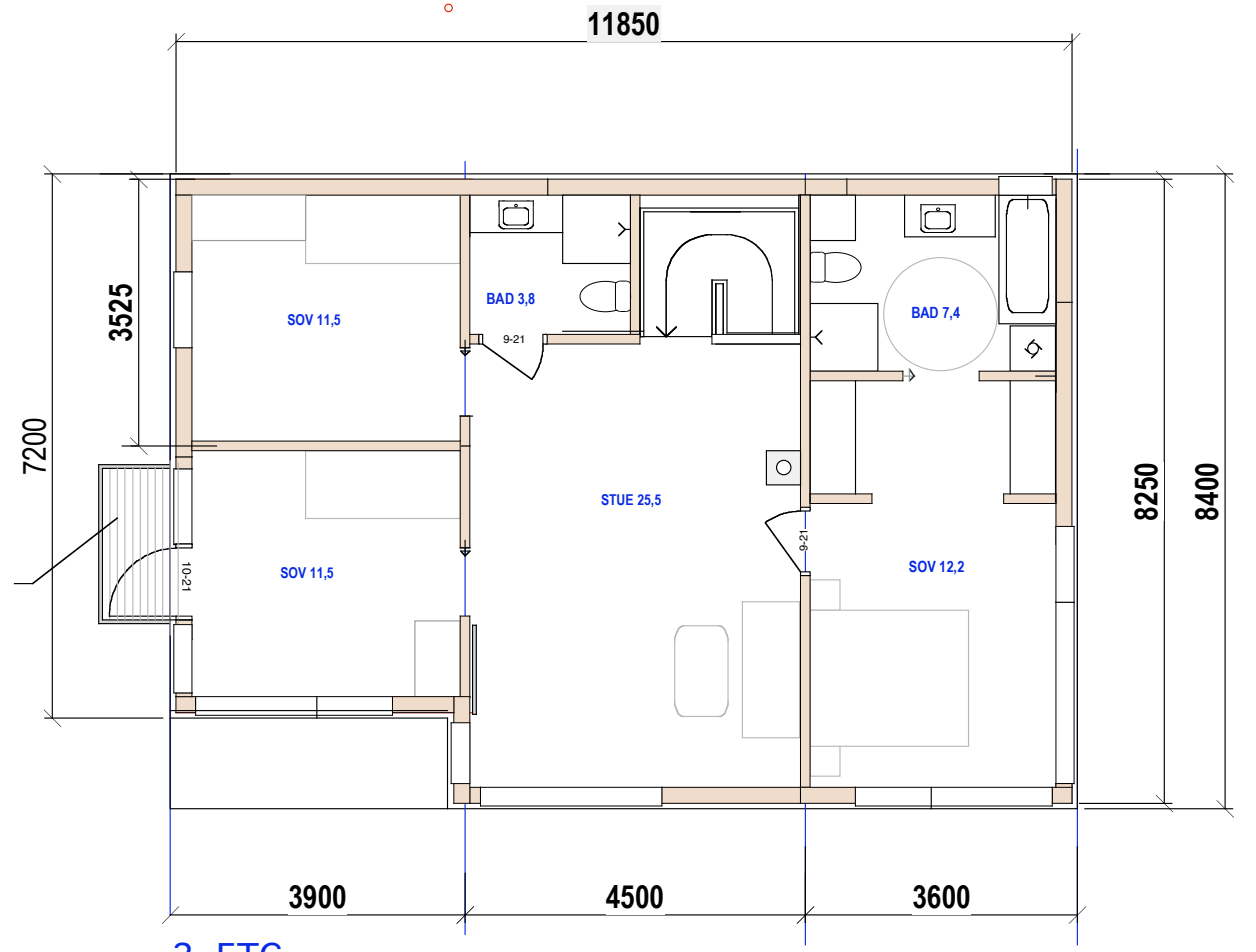
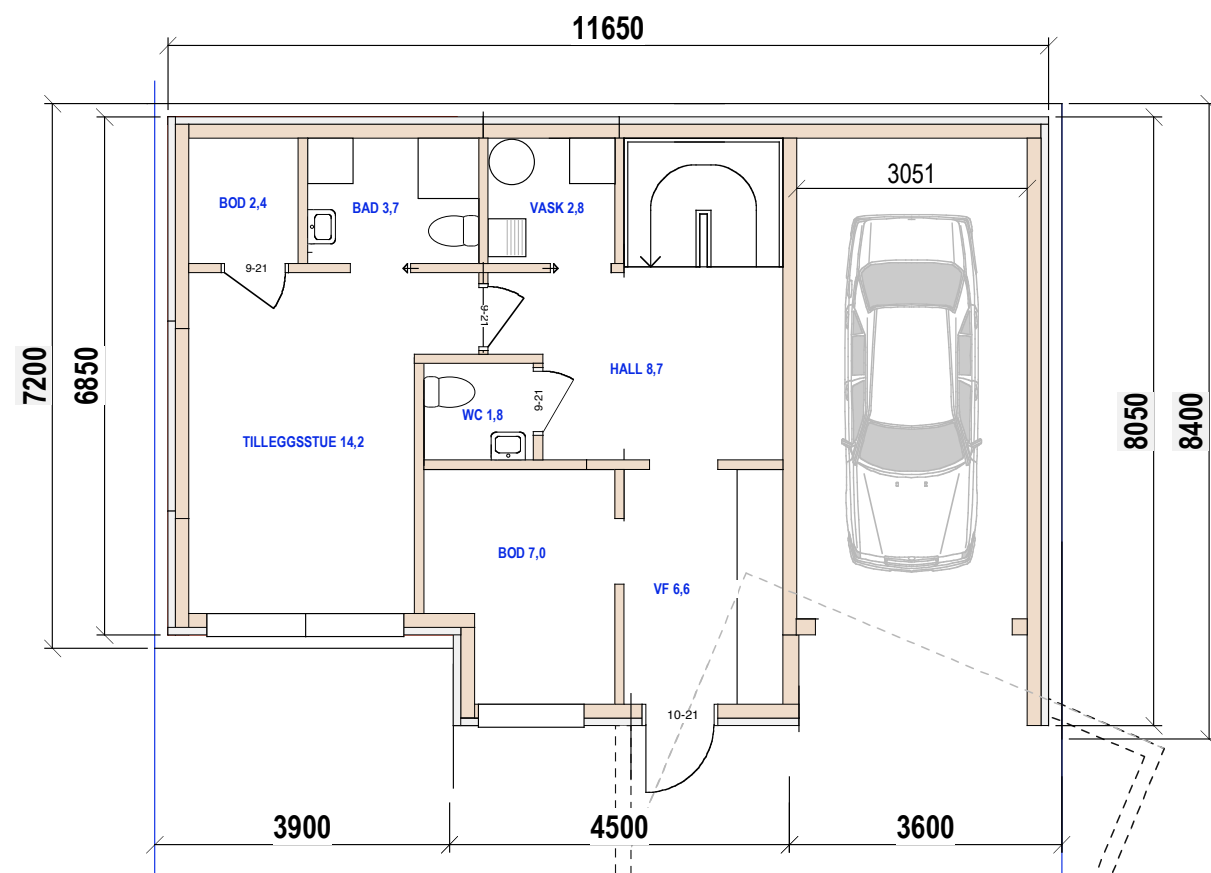


Ikke medregnet i tomteutnyttelse

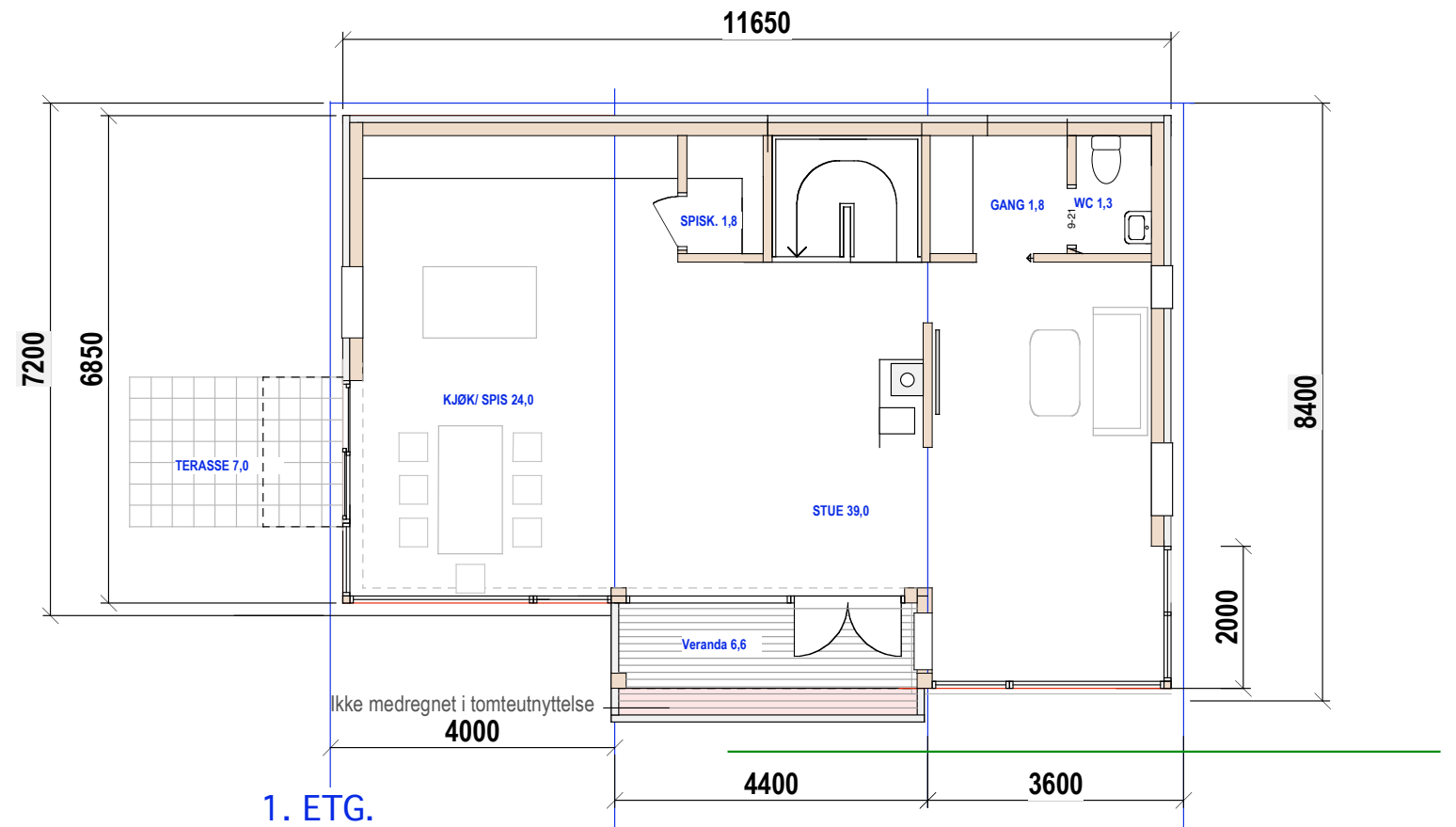


2. ETG.  
BRA Bolig = 85 kvm



U ETG  
BRA Bolig = 54 kvm  
BRA Garasje = 19,5 kvm

Eksisterende garasje



1. ETG.  
BRA Bolig = 76 kvm  
Sum BRA Bolig = 215 kvm  
BRA Garasje = 19,5

E.1-1 Plan og snitt